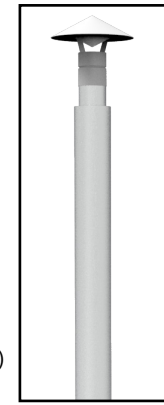


REXENER PR200 HEATER INSTALLATION TO THE HOT-TUB

If you plan to purchase an installation kit, find out the diameter of the many diameters (38, 40, 50 or 75 mm). The buyer will be provided with everything necessary for installation.

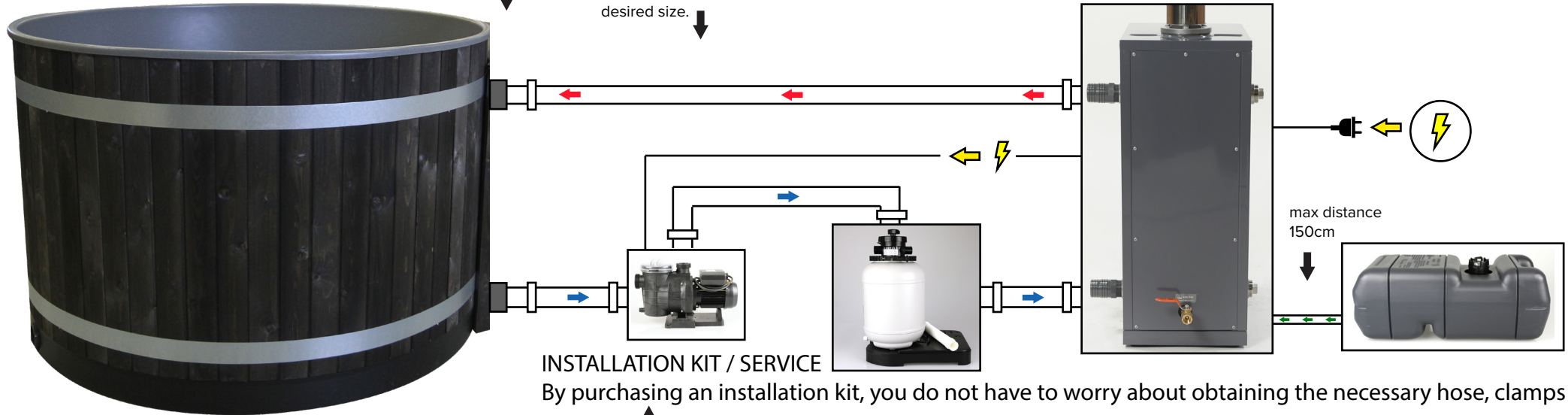
If you are not going to get an installation kit - measure the diameter of many water connections / hose diameter. The package contains 2 reducers for the heater, (38, 40 or 50 mm) which are delivered in the desired size.

- Water hose length max 10 m (+50 ° C)
- Recommendation approx. 2-3 m
- Observe hose insulation if necessary



INSTALLATION KIT / SERVICE

By purchasing an installation kit, you do not have to worry about obtaining the necessary hose, clamps and reducers. Turnkey installation is also available.



INSTALLATION KIT / SERVICE

By purchasing an installation kit, you do not have to worry about obtaining the necessary hose, clamps and reducers.

CIRCULATION PUMP

- Necessary accessory (unless the mass filter is replaced with a package)
- Not included



SAND FILTER

- Keeps the water clean for longer
- Not mandatory, but recommended
- Keep the same water for 2-3 months, also using a lid and suitable chemicals
- Not included

FUEL TANK 23 L

- Installed on the same level or higher than the heater
- When installing, remember that the tank must be able to fill.
- The tank has quick-release fasteners, so it is easy to remove
- Protects from water and heat
- Included in the package



max distance
150cm

THE PACKAGE CONTAINS

- 1 x Rexener PR200 heater
- 1 x key to the device door
- 1 x chimney + chimney cap
- 1 x external fuel tank 23 L
- 1 x faucet removal valve
- 2 x plug for water outlets
- 2 x reducer for water hose
- 1 x threaded tape roll
- 1 x user manual

ADDITIONALLY NEEDED

- Circulating water pump (required)
- We also recommend a mass filter package (the mass filter package can replace a circulating water pump and a sand filter).
- Sufficient number of hoses min. Diameter 38 mm (incl. Installation kit)
- 6-8 pipe clamps (incl. Installation kit)
- 2 suitable reducers for the hot tub (incl. Installation kit)

MASS FILTER KIT

- 2 in 1. Replaces circulating water pump and sand filter
- Keeps the water clean longer
- Not mandatory, but recommended
- Keep the same water for 2-3 months, also using a lid and suitable chemicals
- Not included